

## Local Artists Featured at Sorrel Sky Gallery

Since the beginning, Sorrel Sky Gallery has concurrently showcased many local artists of Southwest Colorado, all with exceptional insight and talent. Our mission is to provide our customers with the finest art representing distinct styles reflecting the culture and beauty of our area. This spring, we will stage a six-woman show at the gallery. Those artists are Sharon Abshagen, Mimi Bonkowske, Carol Salomon, Lorraine Yapps Cohen, Pat Howard, and Cynthia DeBolt.

Sharon Abshagen's paintings speak to the nature lover in all of us. Sharon is motivated by light and color, and she uses that to evoke an emotional response from her viewer. She wants the art enthusiast to hear the rhythm of a stand of aspens, or feel the continuity of cascading mountain cliffs connecting the earth and sky. Sharon liberally draws from the four seasons setting a stage that is unmistakably our Colorado backyard, yet intuitively something more.



*Old Lime Creek Road*

Oil 18"x 24" by Sharon Abshagen

"My paintings are the language I use to communicate the natural beauty of the landscape through the use of light and atmosphere."

Sharon discovered her creative talent in college, weaving large tapestries and designing sweaters. Today, Sharon finds painting on location with friends fun, exciting, and very rewarding. Sharon is a member of the American Academy of Women Artists, The Plein Air Painters of the 4 Corners, and the Oil Painters of America. She has shown her work in numerous exhibits and juried shows in the southwest.

Basket weaving is one of the oldest crafts. There are multiple forms of basketry designs reflecting diverse traditions and locations. Mimi Bonkowske was attracted to the basketry medium as a natural form of self-expression. The lore, the beauty of the art and spiritual investment, all play a key role in her wonderful creations.



Pine Needle Basket

by Mimi Bonkowske

Mimi attended the Art Institute of Chicago, although it wasn't until she arrived in Colorado that she discovered her love of working with natural resources to create beautiful baskets. Having already gathered fresh fallen pine needles, she begins with a sliced walnut shell, a button created from sinew, a drilled wooden base, or a gourd, to name a few. Her process is a very slowly stitched coil method, using a vee stitch to completion. She generally will finish each basket with beads, feathers, wood, bone, or any natural item she can find. The pine needle baskets Mimi creates reflect the beauty of nature, and the resources of the world around us.

## Six Local Artists Featured at Sorrel Sky Gallery (cont)



Floral and Fresh Water Pearl Necklace  
by Carol Salomon

Carol Salomon brings us the world, in uniquely defined treasure necklaces styled in her own fashion. Her distinctive designs follow a well-thought-out balance of shapes and patterns with coordinated color themes. We are fortunate to be able to experience first-hand many of her finds from as far away as China or Indonesia, predominantly displayed semi-precious or precious gems in a sparkling array of complementary patterns and colors.

Carol travels the world, but shares and displays her creativity in local shows, festivals, and on display at Sorrel Sky Gallery. Nationally, her beginnings as a business owner in St. Louis designing "green" interior spaces has provided opportunities selling her creations regionally, and as far away as Atlanta. The name "Creative Greenery" has been transformed to "Creative Beadery."

Lorraine Yapps Cohen's real love is in design and the aesthetic arts. With her scientific background she was sought after by large corporations early on. She now has fully bloomed as a jewelry artist with exceptional talent. Lorraine has combined her technical background with her work in



Petal Pearl Necklace  
by Lorraine Yapps Cohen

metallurgy research, and the management of innovation to cultivate her creative skills. "Colorado has brought a new vision to my designs. Here we experience so much more of earth's geological splendors. Indigenous materials become wearable, beautiful art."

SIX LOCAL ARTISTS REFLECTING THE CULTURE AND BEAUTY OF OUR AREA IN THEIR OWN WAY

Known for bright and inviting watercolors, with intriguing contrasts of patterns and textures, Pat Howard's career has fully merged with her Colorado environment. Pat has been shown in national exhibitions, including the Rocky Mountain National Watermedia Show in Golden, Colorado, and the Adirondack National Exhibition of American Watercolors




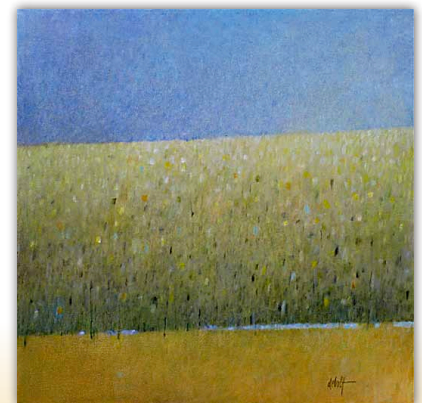
Dove Creek Sun 12"x 12" Watercolor  
by Pat Howard

in New York. She's received first place awards in the 2003 and 2004 Evergreen Art Festival, and was chosen as the Artist of the Year in 2005 by the Durango Area Tourism Office. "Painting keeps my eyes and my mind open. It's like opening a window in a stuffy room, making me more aware of the beauty around me."

Cynthia DeBolt's painting style is reductive. With a masters degree from the University of Michigan, she is constantly simplifying, subtracting and eliminating as she paints. The result is a pairing down to that which will convey the abstract quality and essence that inspired her in the beginning.

"My hope is that my paintings function as a source of meditation in a busy and complex world." Her paintings are a visual hint to the viewer to eliminate the unnecessary details in one's life.

All in one special show this spring, these six artists provoke us to glimpse our southwest Colorado environment in a unique way, one that is rooted in rugged beauty, as solid as the Rocky Mountains, yet subtly described by the artist's sensitive touch. It is their gift that becomes our opportunity to experience, at Sorrel Sky Gallery. 



Spring Tranquility Oil 24"x 24" by Cynthia DeBolt

## Rory Wagner 1950 – 2010



It is with great sadness that we share the news with you that Rory Wagner died this past September. Rory lived in Taos, New Mexico for the last 25 years. Chosen as the 2006 recipient of the New Mexico Governor's Award for Excellence in the Arts, Rory was a painter of rich, realistically rendered figures mostly of Native American imagery. His realistic style has been compared to the European master painter, Jan Vermeer. His passion for perfection often resulted in the destroying of a canvas, only to start anew, creating 6-12 paintings a year. Each of his canvases has a magical presence that depicts his unmistakable style.

It seemed he was destined to end up in an artistic community such as Taos. He was discovered by R.C. Gorman



*Visionary* Giclée 22"x 30"

in the 1970's and from there, his career as an artist blossomed. R.C. Gorman was perhaps the most famous native American artist of his time and became Rory's life-long friend.



*Diligent Journey* Giclée 22"x 30"

His paintings are not only beautiful to look at, they are contemplative, provocative, unsettling, and inspirational. "Rory was an artist for the millennia, truly a modern master. I am reminded of how important his work is, and how fortunate Sorrel Sky Gallery has been to represent such a



*Silent Prayer* Giclée 30"x 22"

fine artist and human being," replied owner Shanan Campbell Wells. It was in September, 2007, that Rory graciously provided us with what has become his last one-man show, at Sorrel Sky. "This show will probably be my last, my studio has become my world," he had said then.

Through the years, his artwork has been placed in public and corporate settings, as well as private collections nationally. His career seemed to be ever growing, garnering a greater following year after year. We will all miss his wonderful creativity and intriguing compositions, while remembering him in the legacy of paintings he's left behind, today and for all time. ✨



*Favorite Things V* Acrylic 40"x 50"

[WWW.SORRELSKY.COM](http://WWW.SORRELSKY.COM)

Once we receive new work, pieces are immediately photographed and presented on our web site. View the newest creations by our artists, as well as their biographies, then join us on "Facebook".

## New Giclée Prints by Tom Palmore



Like the paintings that have made him famous, Tom Palmore is considered an icon in the art world, with his near perfect representations of the animal life forms that he has had the pleasure to meet. His paintings are quite literally animal personality "interviews" represented pictorially.

Tom Palmore has emerged as a real leader of the photo realist movement over the last thirty-five years. An Oklahoma native, his oil and acrylic depictions of the creatures on our planet illustrate superb draftsmanship and a somewhat humorous insight into the personalities of each of his subjects. Think beyond the obvious, and you're just beginning to cross the Palmore threshold.

Palmore is a master at staging a pose. He renders his subjects with intense scrutiny, creating animal portraits thoroughly accurate in every detail. And in their realistic representation, he exhibits an obsession for depicting textures, such as fur and feathers, with nothing less than perfection. But it is often the background subject matter that piques the viewer's interest and curiosity. This, combined with his technical virtuosity, alongside humorous visual combinations, has won him critical acclaim and a strong following from collectors all over the world.

As a result, Palmore's work appears in numerous corporate and private collections and in such prominent museums as

the Smithsonian Institution, the Whitney Museum of American Art, the Brooklyn Museum, and the Philadelphia Museum of Art.

Sorrel Sky Gallery has recently published three new pieces representing over 20 years of Palmore originals. Tom is often asked by friends to use their dogs as models, as was the case with "Baby Billy". He

views all animals however, as "man's best friend."

By his own account, "I've always been a westerner." This attraction particularly to the New Mexico lifestyle has inspired many of his paintings, including "Cowgirl", and to the desert landscape, flora and fauna, expertly captured in the wonderful painting, "Cactus Flower."

"I lead a colorful life," Tom reflects. "The one consistency (in my life) has always been my art." His paintings and prints will always take center stage, and the more time one spends with these images, the more rewarding his creations become. ✨

"I LEAD A  
COLORFUL LIFE.  
THE ONE  
CONSISTENCY  
(IN MY LIFE)  
HAS ALWAYS  
BEEN MY ART."



Cowgirl Giclée 40"x 30"



Baby Billy

Giclée 28"x 46"



Cactus Flower

Giclée 30"x 40"

## Michael Lewis



At a very young age, Michael Lewis' mother helped develop his creativity. She was continually creating some kind of visual art that would eventually lead him into drawing, painting, sculpture, and filmmaking. Michael Lewis studied architecture and music at North Texas State

University and at The University of New Mexico. Additionally, he studied art and design at the Quarter School of Art and Design in Tucson, Arizona. His first job out of school was as a commercial artist in an advertising agency. In 1993 he began painting full time and has been represented in galleries from Florida to California.

Michael is a signature member of the Plein Air Painters of New Mexico and a founding member of Plein Air Painters of the West. Notable owners of Michael's public work are the New Mexico Museum of Natural History and The New Mexico School for the Deaf. He also has created 14 public art projects in New Mexico involving over 10,000 New Mexico Public School students.

Michael travels with his wife, Peggy, in a vintage streamline trailer to various state parks across the country where he paints plein air works that are more fully developed back in his studio. Michael approaches painting like a job and believes continuous production equals

more success. But he says that promotion and production are the most difficult aspects to being an artist. "My resume is my canvas. The paintings I've



Where There's Smoke

Oil 48"x48"

THE PAINTINGS I'VE CREATED IN THE LAST 6 MONTHS ARE THE MOST IMPORTANT. THEY EXPRESS GROWTH AND DIRECTION



Still Life

Oil 16"x 20"

created in the last six months express my growth and direction."

Michael teaches workshops in art production, promotion, book publishing, filmmaking, and creativity. "Our home and studio is a historic building which was built in 1927 as a Presbyterian Outreach Mission Church in New Mexico. We purchased it in 1999 and renovated the church and parsonage." He is continually assessing and re-evaluating his surroundings, the results of which most often end up on canvas. It is our good fortune to witness his latest creations within the paintings on display at Sorrel Sky Gallery.



Still Standing

Oil 8"x 10"

## 2010-2011 CALENDAR OF EVENTS

- Dec 3 Noel Night, Book Signing with local historian, Fred Wildfang, 5 – 9 pm
- Jan 27, 2011 "Rich Heritage, Shining Future" Book Signing Featuring: Duane Smith, 5 – 7:30 pm
- Feb 10 FLC Fund Raiser: *The Art (and Science) of Love*, Featuring: Dr. Linda Schott, 5 – 7:30 pm
- April 8 Spring Show, Featuring: Sharon Abshagen, Mimi Bonkowske, Cynthia DeBolt, Pat Howard, Carol Salomon and Lorraine Yapps Cohen, 5 – 7:30 pm
- May 13 Gallery Walk, Featuring: Teri Greeves, 5 – 9 pm
- August 26 Two-Man Show, Featuring: Gerald Balciar and Ben Nighthorse, 5 – 7:30 pm
- Sept 16 Colorfest Gallery Walk, Featuring: Glen Crandall, 5 – 9 pm



### Long-Awaited New Jewelry of Ben Nighthorse Catalog

Sorrel Sky Gallery is pleased to announce the new "Jewelry of Ben Nighthorse" catalog. This catalog showcases the variety of jewelry that Ben has created, from bracelets to earrings, buckles, bolos, and rings.

### "Little Windows with a Big View," Small Paintings

This fall, Sorrel Sky Gallery is featuring small paintings by fifteen of our most talented artists, with over 70 pieces to choose from. The show will run through Christmas.



Rabbit by Edward Aldrich  
9"x12"



### Star Liana York's new "Range Duty"

Star York's "Range Duty" was initially inspired by the 30th anniversary of the ride of the *Durango Mountain Caballeros*. This sculpture of a ranch hand in a duster, huddled near a fire, is now available at Sorrel Sky Gallery as part of a limited edition of 35.

